

Stomping Tom Connor

♩ = 120

The musical score for "Stomping Tom Connor" is written in D major (two sharps) and 2/4 time. The tempo is marked as ♩ = 120. The score consists of six staves of music. The first staff begins with a treble clef, a key signature of two sharps (F# and C#), and a 2/4 time signature. The melody starts with a quarter rest, followed by a series of eighth and quarter notes. A double bar line with repeat dots appears after the fourth measure. The second staff continues the melody with eighth and quarter notes, featuring an A7 chord above the first measure and a D chord above the fifth measure. The third staff continues with eighth and quarter notes, featuring an A7 chord above the first measure and a D chord above the fifth measure. The fourth staff continues with eighth and quarter notes, featuring an A7 chord above the first measure, a D chord above the third measure, an A7 chord above the sixth measure, and a D chord above the eighth measure. The fifth staff continues with eighth and quarter notes, featuring an A7 chord above the first measure, a D chord above the third measure, a G chord above the sixth measure, and an A7 chord above the eighth measure. The sixth staff concludes the piece with a D chord above the first measure, a double bar line with repeat dots, and a final melodic phrase.

Joséphine

D

A⁷

Em



A⁷

Fdim D/F#

D



Am⁷

D⁷

G

Em

G

G#dim

D/A

B⁷

E⁷

A⁷

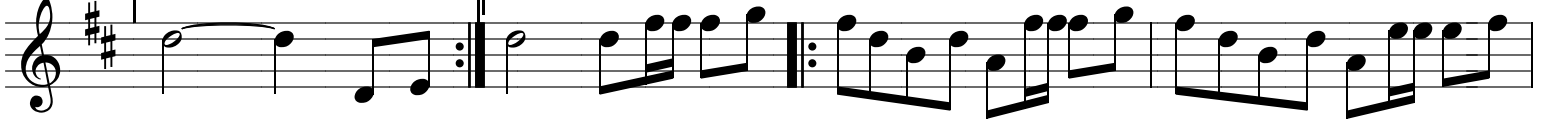


1. D

2. D

D

A⁷



1. A⁷

D

2.

A⁷

D



Reel de la Van

1

Marcel Messervier

The musical score for "Reel de la Van" is presented in four staves. The key signature is D major (two sharps) and the time signature is 2/4. The melody is written in treble clef. Chord symbols are placed above the notes to indicate the harmonic accompaniment.

Staff 1: Chords: D, G, D, D, Em, A, D. The melody starts with a quarter note D, followed by a quarter note G, then a pair of eighth notes (A, B), a quarter note D, a half note E, a quarter note F#, a pair of eighth notes (G, A), and a quarter note D.

Staff 2: Chords: D, G, D, D, Em, A, D. The melody continues with a quarter note D, a quarter note G, a pair of eighth notes (A, B), a quarter note D, a half note E, a quarter note F#, a pair of eighth notes (G, A), and a quarter note D. This staff ends with a double bar line and repeat dots.

Staff 3: Chords: D, Em, A, D. The melody features a pair of eighth notes (A, B), a pair of eighth notes (C, D), a quarter note E, a half note F#, a pair of eighth notes (G, A), a pair of eighth notes (B, C), a quarter note D, a pair of eighth notes (E, F#), a pair of eighth notes (G, A), a pair of eighth notes (B, C), and a quarter note D.

Staff 4: Chords: G, G, A, D. The melody continues with a pair of eighth notes (A, B), a pair of eighth notes (C, D), a quarter note E, a half note F#, a pair of eighth notes (G, A), a pair of eighth notes (B, C), a quarter note D, a pair of eighth notes (E, F#), a pair of eighth notes (G, A), a pair of eighth notes (B, C), and a quarter note D. This staff ends with a double bar line.