

# Set Pretty Little Cindy

INTRO

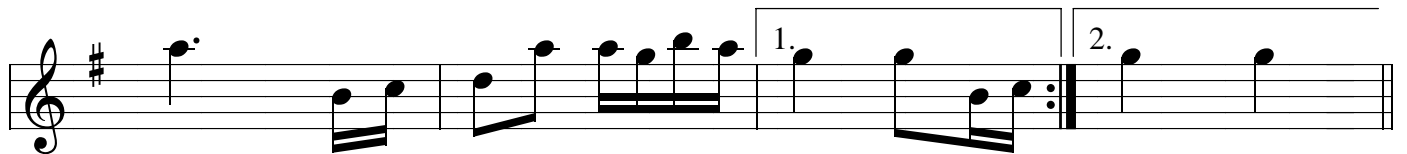
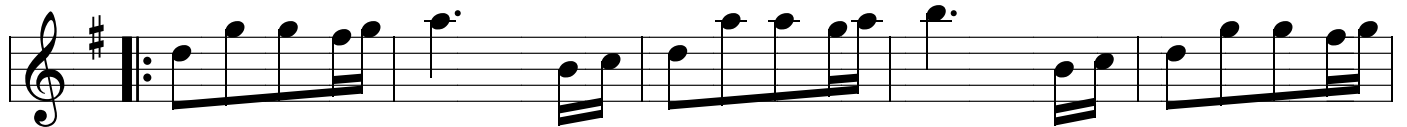
Musical score for "Set Pretty Little Cindy" in G major, 2/4 time. The score consists of six staves of music. The first staff begins with an "INTRO" label and contains a treble clef, a key signature of one sharp (F#), and a 2/4 time signature. The melody starts with a quarter rest, followed by a quarter note G4, an eighth note A4, and a quarter note B4. A double bar line with repeat dots follows. The second staff continues the melody with a quarter note C5, an eighth note D5, and a quarter note E5. A trill (tr) is indicated over the eighth note D5. The third staff continues with a quarter note F#5, an eighth note G5, and a quarter note A5. A trill (tr) is indicated over the eighth note G5. The fourth staff continues with a quarter note B5, an eighth note C6, and a quarter note D6. A trill (tr) is indicated over the eighth note C6. The fifth staff continues with a quarter note E6, an eighth note F#6, and a quarter note G6. A trill (tr) is indicated over the eighth note F#6. The sixth staff concludes the piece with a quarter note A6, an eighth note B6, and a quarter note C7. A trill (tr) is indicated over the eighth note B6. Chord diagrams are provided for various chords: A (boxed), G, Am, D7, B (boxed), and G. First and second endings are marked with "1." and "2." respectively. A fermata is placed over the final note of the first ending.

Reel des Oignons

D.S.

Musical score for "Reel des Oignons" in G major, 2/4 time. The score consists of two staves of music. The first staff begins with a treble clef, a key signature of one sharp (F#), and a 2/4 time signature. The melody starts with a quarter note G4, an eighth note A4, and a quarter note B4. A double bar line with repeat dots follows. The second staff continues the melody with a quarter note C5, an eighth note D5, and a quarter note E5. A double bar line with repeat dots follows. The third staff continues with a quarter note F#5, an eighth note G5, and a quarter note A5. A double bar line with repeat dots follows. The fourth staff continues with a quarter note B5, an eighth note C6, and a quarter note D6. A double bar line with repeat dots follows. The fifth staff continues with a quarter note E6, an eighth note F#6, and a quarter note G6. A double bar line with repeat dots follows. The sixth staff concludes the piece with a quarter note A6, an eighth note B6, and a quarter note C7. First and second endings are marked with "1." and "2." respectively. A fermata is placed over the final note of the first ending.

# Set Pretty Little Cindy



## Crooked Stovepipe

