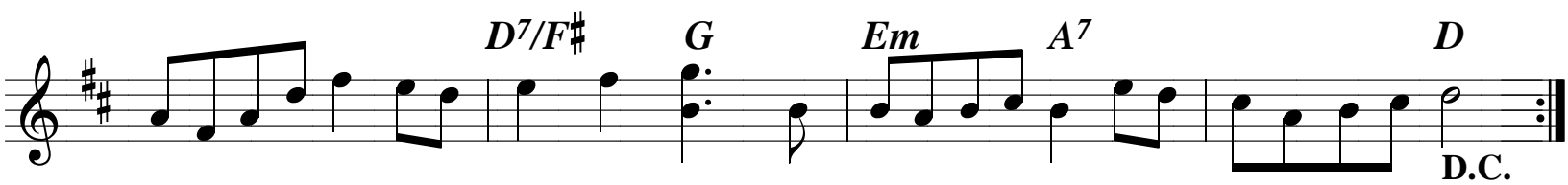


Galope de Baie St-Paul



Quadrille de Gaspé

Isidore Soucy

Arr., notation et accords: Germain Leduc

♩ D D7 G

E7 A7

1. D 2. D D D7 3

G E7 A7

1. D 2. D

D.S.

Snow Deer

Trad.

The musical score for "Snow Deer" is written in G major (one sharp) and 2/4 time. It consists of five staves of music. The first staff begins with a treble clef, a key signature of one sharp (F#), and a 2/4 time signature. It starts with a quarter rest followed by a quarter note G4, then a repeat sign. The first ending of the first staff contains a dotted quarter note G4, an eighth note A4, a quarter note B4, and a quarter note G4, with a D chord above. The second ending contains a quarter note G4, a quarter note A4, a quarter note B4, and a quarter note G4, with an E7 chord above. The second staff begins with a treble clef, a key signature of one sharp, and a 2/4 time signature. It contains a first ending marked "1. A7" above the first measure, followed by a quarter note G4, a quarter note A4, a quarter note B4, and a quarter note G4. The second ending contains a quarter note G4, a quarter note A4, a quarter note B4, and a quarter note G4, with a D chord above. The third staff begins with a treble clef, a key signature of one sharp, and a 2/4 time signature. It contains a first ending marked "2. A7" above the first measure, followed by a quarter note G4, a quarter note A4, a quarter note B4, and a quarter note G4. The second ending contains a quarter note G4, a quarter note A4, a quarter note B4, and a quarter note G4, with a D chord above. The fourth staff begins with a treble clef, a key signature of one sharp, and a 2/4 time signature. It contains a first ending marked "G" above the first measure, followed by a quarter note G4, a quarter note A4, a quarter note B4, and a quarter note G4. The second ending contains a quarter note G4, a quarter note A4, a quarter note B4, and a quarter note G4, with a D chord above. The fifth staff begins with a treble clef, a key signature of one sharp, and a 2/4 time signature. It contains a first ending marked "1. A7" above the first measure, followed by a quarter note G4, a quarter note A4, a quarter note B4, and a quarter note G4. The second ending contains a quarter note G4, a quarter note A4, a quarter note B4, and a quarter note G4, with a D7 chord above. The final staff contains a first ending marked "1. A7" above the first measure, followed by a quarter note G4, a quarter note A4, a quarter note B4, and a quarter note G4. The second ending contains a quarter note G4, a quarter note A4, a quarter note B4, and a quarter note G4, with a D chord above. The score concludes with a double bar line and the instruction "D.S." (Da Capo).

Belledune Quickstep

The musical score for "Belledune Quickstep" is written in D major (two sharps) and 2/4 time. It consists of seven staves of music. The first staff begins with a treble clef, a key signature of two sharps, and a 2/4 time signature. The melody starts with a series of eighth notes, followed by a triplet of eighth notes. A repeat sign with first and second endings is present. The second staff continues the melody with a triplet of eighth notes and a G chord. The third staff features an Em chord and an A7 chord. The fourth staff has a first ending with a D chord and a triplet, followed by a second ending. The fifth staff includes a G chord and an A7 chord. The sixth staff contains D, A7, D, and G chords. The seventh staff concludes with an A7 chord, a first ending with a D chord, a second ending with a D.S. (Da Capo) instruction, and a triplet of eighth notes.