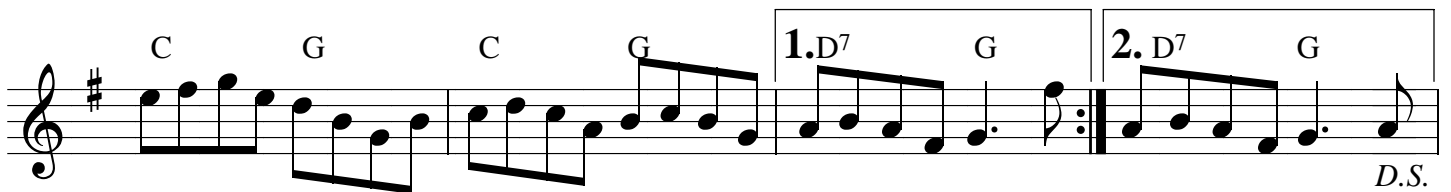
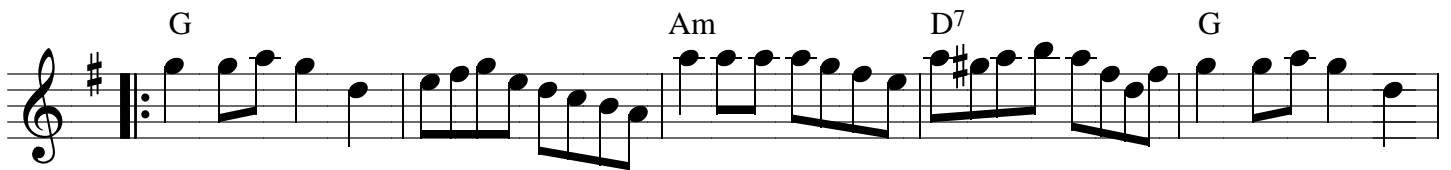
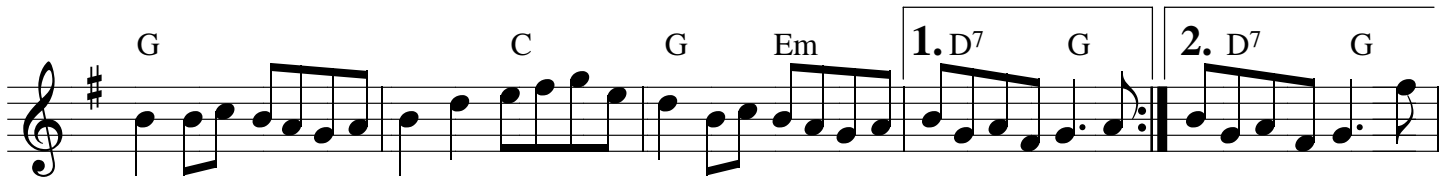
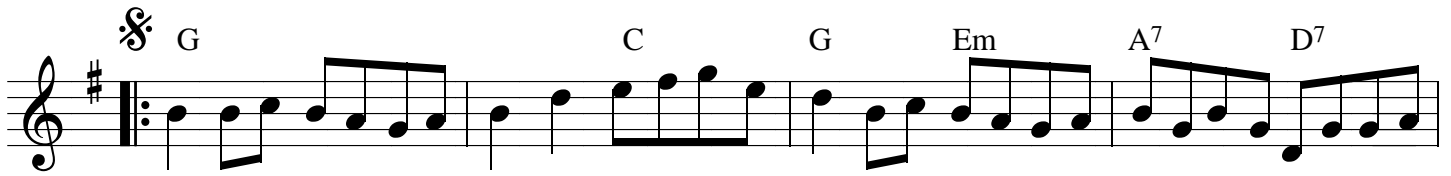


Reel mystérieux

A. DeJarlis

INTRO



LUCKY TRAPPER

ANDY DEJARLIS

♩ G D

G D

1. G 2. G G Am

D G Am

D 1. G 2. G D.S.

Golden Wedding Reel

The musical score for "Golden Wedding Reel" is written in G major (one sharp) and 2/4 time. It consists of four staves of music. The first staff begins with a treble clef, a key signature of one sharp (F#), and a 2/4 time signature. The melody is primarily eighth and sixteenth notes. Above the first staff are two chord labels: 'G' and 'F'. The second staff continues the melody and includes five chord labels: 'G', 'C', 'G', 'D7', and 'G'. The third staff features two chord labels: 'C' and 'D7'. The fourth and final staff includes four chord labels: 'C', 'D7', 'G', 'D7', and 'G'. The piece concludes with a double bar line and repeat dots. The music is characterized by a consistent eighth-note accompaniment pattern.